

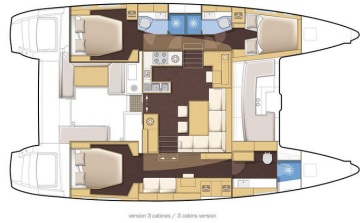


LAGOON 450 F NEW
LAGOON 450 F Owner version (2018)

Ref1333

Lagoon

Located: France



LAGOON 450 F NEW

LAGOON 450 F Owner
version (2018)

Lagoon

Length 13.9 M (46')

Located: France

Ref1333

€ 516 900



Lagoon 450 - Mention obligatoire / Mandatory credit: Photo Nicolas Claris

Type	Modern
Propulsion	Sail
Hull	Catamaran
Length	13.9m (46')
Hull Material	Fiberglass

Guests	6
Guest Cabin(s)	3
Built/Refit	2018/-
Builder	VPLP

Windward Islands Yachting & Travel, FRANCE, SIRET 80739377200049

Contact: brokerage@windward-islands.net

Phone: +33 4 93 38 12 14

Comments: 3 CABINS VERSION - Comfort pack Lagoon
220V 50Hz version

COMFORT PACK : with curtains - Fusion USB Player + 2 loudspeakers in salon - Navigation Pack B&G 2018 - Pair of s/steel davits & manual winch - Additional fridge 130L (34US Gal) - Leather bulkhead organizers in the cabins - Electrical manoeuvre winch to starboard side 60.2STAEH - Deck wash pump sea water / fresh water - Electric seawater pump - Fresh water dock inlet - Bathroom floor with wooden slats - 3 additional service batteries 140Amp + 2nd 40Amp charger - Pulpits with wooden seats - Electrical circuit with 60 Amp battery charger - Battery controller - Helm seat cushions Dark Grey - Extra fresh water tanks port & starboard 2 x 175L (2 x 46US Gal) - Flag halyards on spreaders - Deck courtesy lights in cockpits, transoms and flybridge - Indirect lighting in cabins and salon - Indirect lighting in companionways - Waterproof loudspeakers in cockpit and fly - Porthole in galley - Aft portholes in aft cabins.

EXTRA FOR INTERIOR WOOD IN LIGHT ALPI OAK WITH MILANO FLOOR

STANDARD UPHOLSTERY : SHARK BROWN (salon & settees)

EXTRA FOR DACRON SQUARE TOP MAINSAIL IN LIEU OF STANDARD

CODE 0 RIG AND POLE

LAZY BAG WITH COVER - GRAPHITE

SUNLOUNGING AREA CUSHIONS ON FLYBRIDGE - DARK GREY

HELM STATION CANVAS BIMINI WITH WINDOW - GRAPHITE

WINDLASS REMOTE CONTROL AT FLYBRIDGE WITH CHAIN COUNTER

AFT COCKPIT CUSHIONS - DARK GREY

FORWARD COCKPIT CUSHIONS - DARK GREY

ENGINES 2 x 57 HP (Yanmar 4JH57)

PAIR OF 3BLADES FOLDING PROPELLERS FOR YANMAR 4JH57 (57HP) 2 192,00 €

ONAN GENSET 11Kva 220V / 50Hz + COCOON 22 295,00 €

GEL BATTERIES IN LIEU OF ACID BATTERIES 1 053,00 €

USB SOCKETS IN THE CABINS (x4) - 3 CABINS 140,00 €

QUIET FLUSH ELECTRICAL TOILETS - 3-CABIN VERSION 1 789,00 €

CRUISAIR A/C 48000 BTU 220V - 3-CABIN VERSION ALPI OAK 18 063,00 €

DISH-WASHER 6 sets 220V - ALPI OAK 1 027,00 €

B&G 4G RADAR

B&G VHF V50

2nd H50 HANDSET AT HELM STATION FOR VHF B&G

AIS 500 B&G TRANSCEIVER WITH ANTENNA COUPLING

B&G ZEUS3 12" DISPLAY AT HELM STATION

DINGHY SET CL 340 WITH CONSOLE - GREY WITH HONDA ENGINE BF20HP

LAUNCHED, RIGGED, ANTIFOULING (4 docklines, 6fenders, diesel, anchor set)