

SINGAS

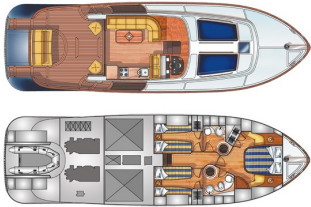
Ref 1326

EMOZIONE 55 FLY (2005)

Franchini

Located: Germany

GENERAL



SINGAS

EMOZIONE 55 FLY (2005)

Franchini

Length 17.1 M (57')

Located: Germany

Ref 1326

€ 590 000



Sale	Sold
Name	Singas
Status	Used
Hull	Mono
Superstructure	Flybridge
Propulsion	Power
Type	Modern
Shipyard	Franchini
Designer	Massimo Franchini
Model	EMOZIONE 55 FLY
Year	2005
Refit	2019
Asking Price	€ 590 000
Taxes paid	Paid
Flag	Germany
Location	Germany
Hull Material	Composite
Availability Date	18-Dec-2024
Length	17.1m (57')
Guests	7

EMOZIONE 55 FLY (2005)

Franchini

Located: Germany

SPECIFICATIONS

Length	17.1m (57')
Beam	4.8m (16')
Draft	1.3m (5')
Fuel Tank	1x / 3000 Litres / 780 US Gallon
Water Tank	1x / 1000 Litres / 260 US Gallon
Weight	24 Tons / 52896 Lbs

EMOZIONE 55 FLY (2005)

Franchini

Located: Germany

Comments:**GENERAL:** Rare and wonderful **Franchini EMOZIONE 55 FLY** for sale.

Accommodation : 6 guests in 3 double cabins + 1 crew.

Yacht perfectly maintained, refitted and upgraded.

Key points : turn head design strongly inspired by the lobster boats, strong building, hydraulic swimming and tenderlift platform ; stability & seakeeping at high (35knots), cruising (20knots), low economical speed (9knots), including at anchor ; major refit in 2019 with new starboard engine, port engine completely overhauled, generator overhauled, new air conditioning, new electronic, new outside teak deck and furniture,

Originally designed by his designer as a day boat, this **Emozione 55**, the first of what will become the 55 Fly, has been completely rethought by his first owner for long cruises all around the Mediterranean.

To begin the interior has abandoned the heavily frosted dark woods and varnishes of the Emozione series for a more minimalist and contemporary design, very light woods, satin varnishes, and sleek shapes, all marrying perfectly with the neo-classical forms of the boat.

His hull design, strongly inspired by the lobster boats of the East Coast of the United States, which were to be boats both capable of moving quickly and being very stable at anchor, is a major asset.

Thanks to this great stability and a very low center of gravity, his seakeeping at the conveying speed of 9 knots is exceptional and his consumption at this speed is lower than that of a trawler of 40 feet.

And when time is running out or the weather gets bad, or simply by the pleasure of the wind in the hair, a thrust on the throttle propels the boat at a cruising speed of 17 to 20 knots, with still a lot of power reserved.

At this speed, his capacities on heavy sea are impressive, as well as the stiffness of his construction in composite Fiberglass / Kevlar, PVC foam or Balsa, seriously structured with spars and floor timbers of size more than respectable.

SINGAS is today an unique yacht in many points, reliable, proven and truly playful. Many pieces of equipment have been replaced over time and are new or very recent.

The hull was completely sanded, coated and repainted during the 2015/2016 winter season.

A major refit was done in 2018/2019. The interior was done highest level renovated and partly new teak installed. The deck teak is new and individually crafted. All outside teak furniture are new.

All window seals were checked and renewed.

The electronic is new with the latest Simrad standard and upgraded to NMEA 2000.

DC/AC inverter is new.

Air conditioning system is new.

TV satellite receiver is now installed, and Fusion Music system installed.

Inside light updated to LED.

New icemaker installed.

Starboard engine including Turbochargers and exhaust pipes are new with now 120 hours of running.

The Port engine has 2600 hours, new injectors were installed, Turbochargers and exhaust pipes as well. The fundamentals of both engines are new. It was installed a new MAN engine electronic controller. The propellers were checked and polished.

All hydraulic cylinders were serviced.

New water pumps were installed, and the hot water system upgraded with new boiler and connected to the engine.

The Generator is fully updated and overhauled with all systems like Controller, Water oil-and fuel Pump new.

Tank system was refitted, and tanks cleaned, the day tank got a new maintenance cover.

Captain cabin was rebuilt and upgraded.

New antifouling.

New Batteries in 2021.

New upholstery by famous Designer Rühmling.

We have sold SINGAS to its current owner in 2018 and we know all boat history.

Yacht ready to sail!

VAT paid.

Complete listing & additional pictures on request.

MECHANICAL

Number of engine	2
Engine Manufacturer	Man
Engine Model	R6-800 CR
Engine HP	800
Drive	Shaft line
Fuel	Diesel
Number of generator	1
Generator Manufacturer	Kolher
Model	011EFOZD
Outgoing Voltage	220 Volts
Power	11 Kva
A/C	Yes
Brand and type	Condaria PCWM/FCL/CHO 6001
Bow thruster	Yes

Comments: Speeds / Consumption :

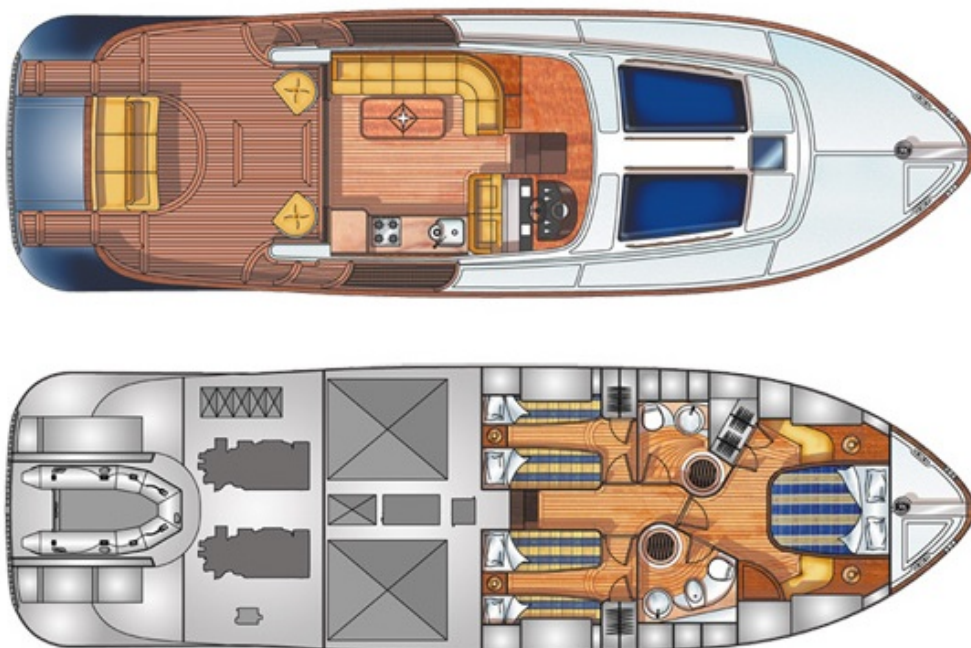
9 knts / 30 L/h
 20 knts / 170 L/h
 25 knts / 220 L/h
 max: 32 knts / 320 L/h.

Gear box : ZF 325A R.R. 1.733,
 Boat trim tabs : BCS MY 4000 (hydroelectric power plant **new 2016**),
 Bow thruster : 180 Kgf Side Power/Sleipner dualprop (**new 2015**).

*Air Conditioning, **reversible**, Condaria - Salon & cabins.*

Water pump Gianneschi ECOJET (**2016**) + 1 Emergency Jabsco dualpump.

ACCOMODATION



Guest Cabin(s)	3
Double	3
Crew Cabin(s)	1
Single	1
Number berths	7
Bathrooms	2
Toilets	2

Comments: Forward owner cabin with ensuite bathroom,
 2 twin cabins & 1 bathroom,
 Crew cabin with maintenance workshop,
 Salon, gangway and cabins in blond oak, linings white cream, pleather and alcantara,
 Bathrooms in blond oak, showers in pearly tiles,
 Galley and helm station in white lead teak,
 Salon and outside upholstery in brown pleather. **All the outside upholstery new 2017.**
 Toilets : Owner : Tecma Elite standart (**new 2017**) / Guest : Tecma Elite short.

EQUIPMENT

Waterheater	1
Brand and type	Quick (60L.)
Year	2015
Pressured water	Yes
Cokpit shower	1
Fridge	4
Freezer	1
Oven	1
Burnerstove	1
Microwave	1

Comments:

- 1 Galley fridge Frigoboat 130 Liters (**new 2015**),
- 1 Stainless steel fridge Frigoboat 130 L. in the hold (**new 2015**),
- 1 Stainless steel freezer Frigoboat 130 L. in the hold (**new 2015**),
- 2 Outside fridge Waeco 40 L. (cockpit & flybridge),
- Glass-ceramic cooking plate (3) Shott,
- Oven/microwave/grill Samsung,
- Dishwasher 5 cutlery Dometic DW 235,
- Washing machine 5 Kg SMEG LSE 1600,
- Vaccum cleaner centralized in the engine room with one outlet in the owner cabin and one in the salon.

EMOZIONE 55 FLY (2005)

Franchini

Located: Germany

ELECTRONIC /
NAVIGATION /
MULTIMEDIA

Autopilot	1
Brand and type	Simrad AP 26
Vhf	1
Brand	Simrad RS 82
Gps	2
Brand	(charts plotters)
Radar	1
Brand	Simrad RA 41 C
Loch	Yes
Brand	Simrad
Depthsounder	Yes
Brand	Simrad
Hifi	2
TV	2

EMOZIONE 55 FLY (2005)

Franchini

Located: Germany

ELECTRICITY

Shore power converter	1
Power	220 Volts
Batteries charger	4
Inverter	1
Batteries for service	4
Batteries for engine(s)	2

Comments: Batteries chargers :

- Service 1 MDP 60 A 24V (**2015**),
- Engines 1 MDP 40 A 24V (**2016**),
- Bow thruster 1 MDP 40 A 24V (**2016**),
- Generator 1 Dolphin 10A 12V (**2016**).

Batteries :

- Engines : 2 batteries 225A (**new september 2017**),
- Service : 4 batteries 240A to replace,
- Bow thruster : 2 batteries 225A (2015).

EMOZIONE 55 FLY (2005)

Franchini

Located: Germany

DECK & SAFETY

Windlass	1
Brand	Lofrans
Power	2000 W
Year	2016
Swimplatform	1
Brand and type	(Hydraulic)
Swimming Ladder	1
Anchor	1
Type	FNI (30Kg)
Rode	1
Brand and type	100m of chain 12 (new 2015)
Liferaft	1
Safety equipment	French security equipment
Passengers	8

Comments: Hydraulic plateform (*unique on an Emozione 55*), tenderlift, structure composite and teak new (**2017**).

SINGAS

Ref 1326

EMOZIONE 55 FLY (2005)

Franchini

Located: Germany

RIG / SAILS / CANVAS

Comments:

- Cockpit cover.

SINGAS

Ref 1326

EMOZIONE 55 FLY (2005)

Franchini

Located: Germany



SINGAS

Ref 1326

EMOZIONE 55 FLY (2005)

Franchini

Located: Germany





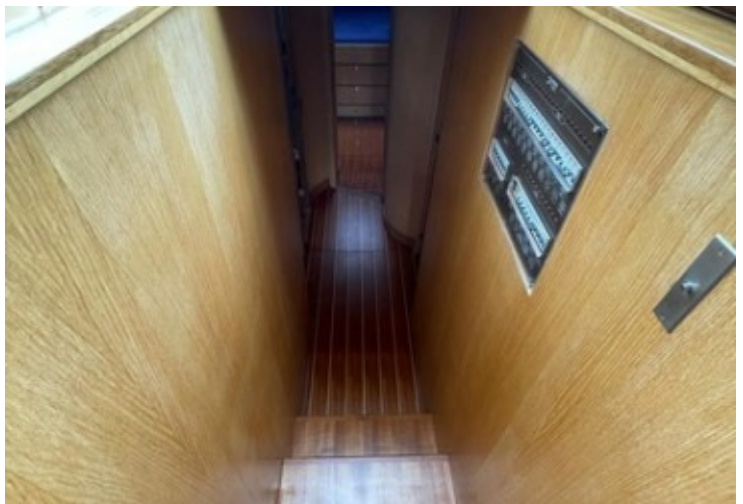
SINGAS

Ref 1326

EMOZIONE 55 FLY (2005)

Franchini

Located: Germany



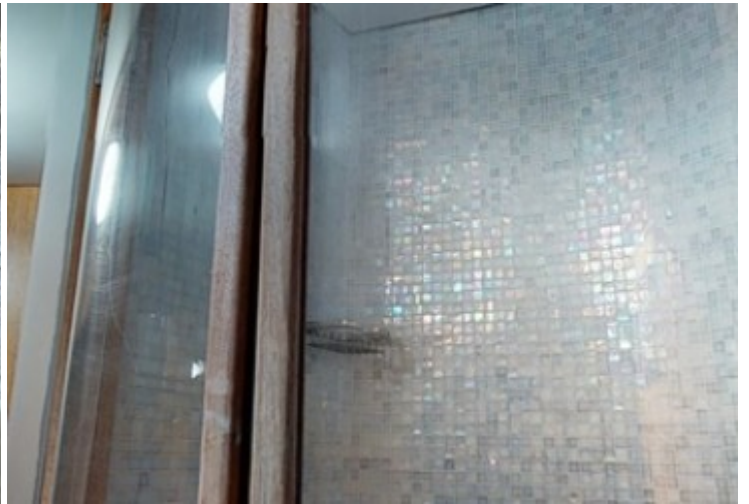
SINGAS

Ref 1326

EMOZIONE 55 FLY (2005)

Franchini

Located: Germany



SINGAS

Ref 1326

EMOZIONE 55 FLY (2005)

Franchini

Located: Germany

